

Strengths

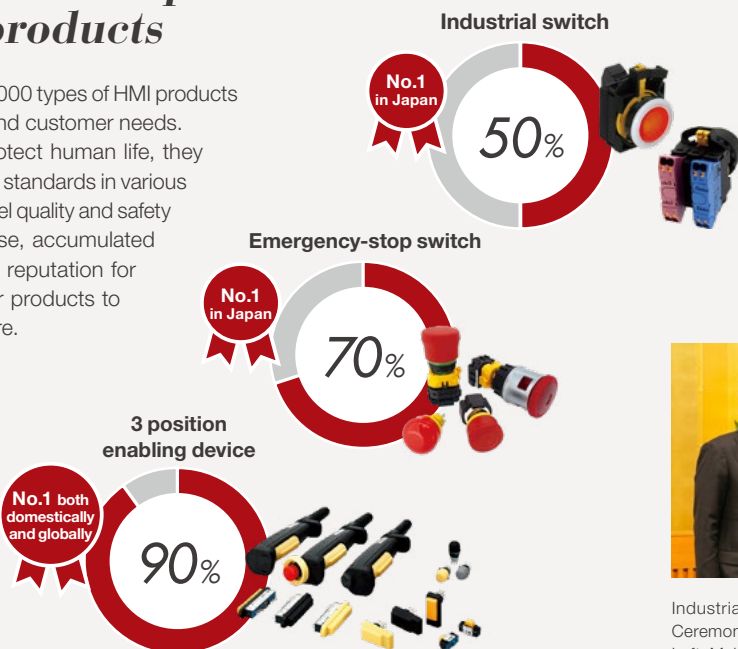
1 A diverse line-up of control device products

IDEC offers more than 100,000 types of HMI products for a variety of industries and customer needs.

As these products protect human life, they need to be compatible with standards in various countries and meet high-level quality and safety requirements. Our expertise, accumulated over many years, and our reputation for reliability have enabled our products to achieve a high market share.

High market share in the HMI and safety sector

FY2023 achievements (according to in-house research)



4 Global business expansion through M&A and partnerships



2 Safety DNA

Product development based on safety DNA

IDEC incorporated an interlock mechanism in the switch boxes developed in 1950, soon after the company was founded, in order to ensure operator safety. The resulting products became enduring best-sellers. This commitment to safety has become part of our DNA and has served as the basis for product development since our founding, enabling us to provide high-quality products.



SB metallic switch box

3 Promotion of international standardization

Active participation in the creation of international standards >> P.37

Since the 1990s, IDEC has actively participated in the development of international standards.

The 3-position enabling device, for which IDEC led the creation of the international standard, has been adopted by major robot manufacturers worldwide and holds more than 90% of the market share.

In October 2022, Dr. Toshihiro Fujita, Senior Executive Officer, received the Prime Minister's Award of Industrial Standardization Project Award in recognition of his achievements in international standardization activities for over 20 years.



Industrial Standardization Project Award Ceremony

Left: Makoto Nagamine, Parliamentary Vice Minister of Economy, Trade and Industry
Right: Toshihiro Fujita, Senior Executive Officer, IDEC CORPORATION

To expand our business globally, we are actively pursuing mergers and acquisitions (M&A) opportunities and partnership agreements with companies both in Japan and abroad that can be expected to provide synergy with our business activities. The addition of France's APEM to the IDEC Group in 2017 has been a major factor in increased business growth in recent years.

5 IDEC products and services that contribute to society

The IDEC Group's technology and products are contributing to resolve various societal challenges in factories and other manufacturing sites as well as in daily life scenes, thereby helping to secure the future of manufacturing and living.

Office buildings

Used to control building management, monitoring systems, parking lots, elevators, and so on, contributing to the convenience and increased safety of office buildings.



Public transport

Used to stop trains in the event of an emergency and prevent people from becoming trapped by the railway platform safety barriers, thereby helping to ensure passenger safety and support the daily operations of public transport systems.



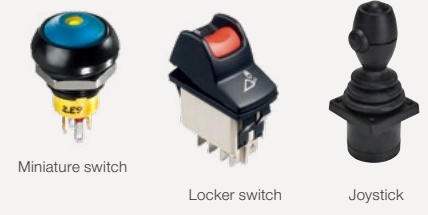
Various machine devices in factory facilities and manufacturing lines

Installed on machine tools, semiconductor manufacturing equipment, and various other devices and used as operation and control units on manufacturing lines, thereby helping to improve productivity, efficiency, and safety.



Special vehicles

Installed in the operating sections of vehicles such as construction machinery and agricultural machinery, thereby supporting operator safety and ANSHIN.



Petrochemical and chemical plants

These products can be used even in hazardous areas where flammable substances are produced, preventing serious industrial accidents.



Logistics warehouse

Devices that enable automated transport and sorting of cargo at worksites that need to handle an increased logistics volume, thereby helping to promote the automation of operations.

