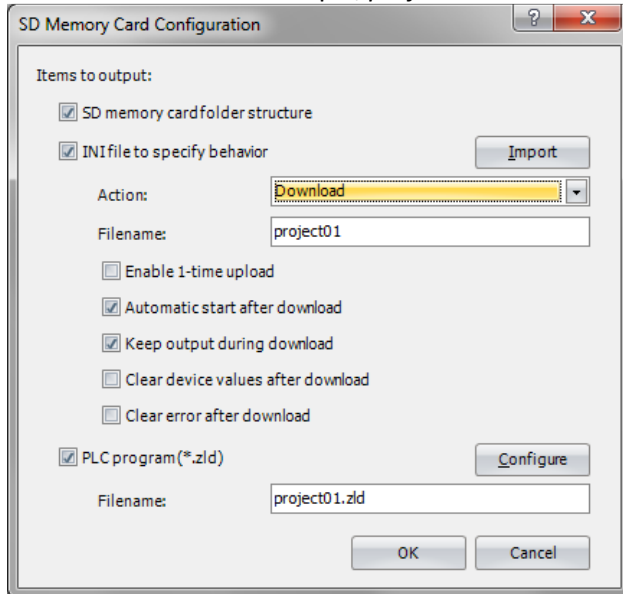


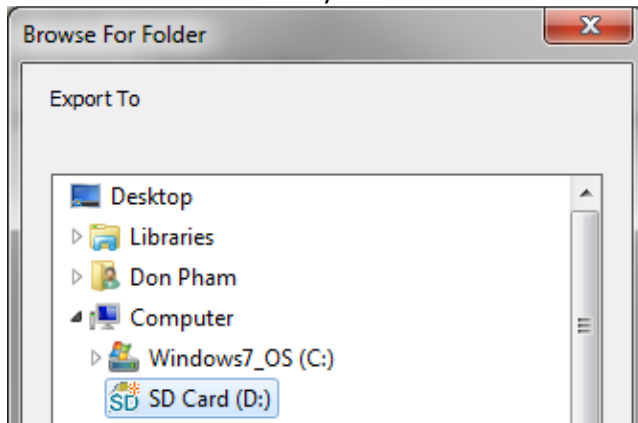
# Application Notes

## How to transfer the ladder program in SD Card to FC6A CPU

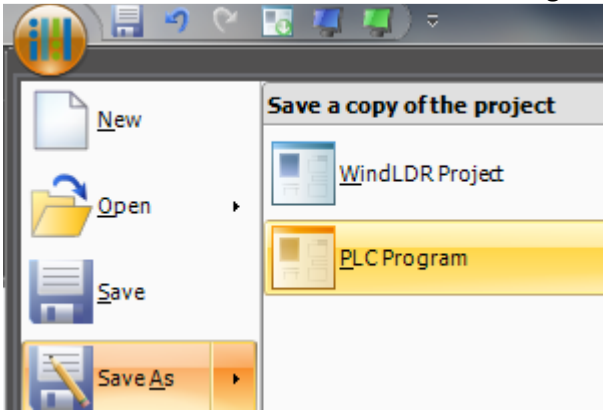
1. Insert SD Card into the laptop/PC.
2. In WindLDR software, click **Configuration** tab → **Configuration (SD Card)**
3. Enter Filename: For example, *project01*. Click **OK**



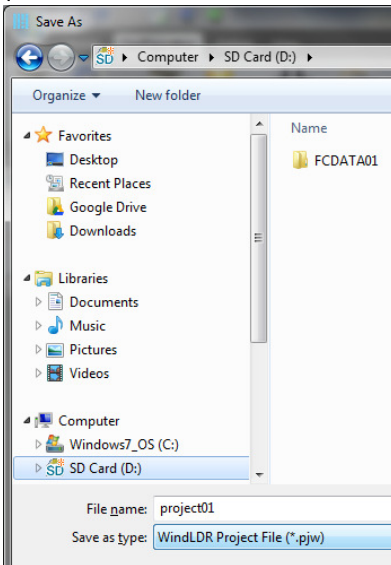
4. Browse to SD Card memory location. Click **OK**



5. Click the WindLDR icon → **Save As** → **PLC Program**



6. Browse to SD Card memory location, and click **Save**.  
(Make sure the Filename match in step 3 above)



7. Remove SD Card from the laptop/PC.
8. Insert SD Card into FC6A CPU.
9. Cycle power FC6A CPU.
10. The program stored in SD Card will automatically transfer from SD Card to FC6A CPU.