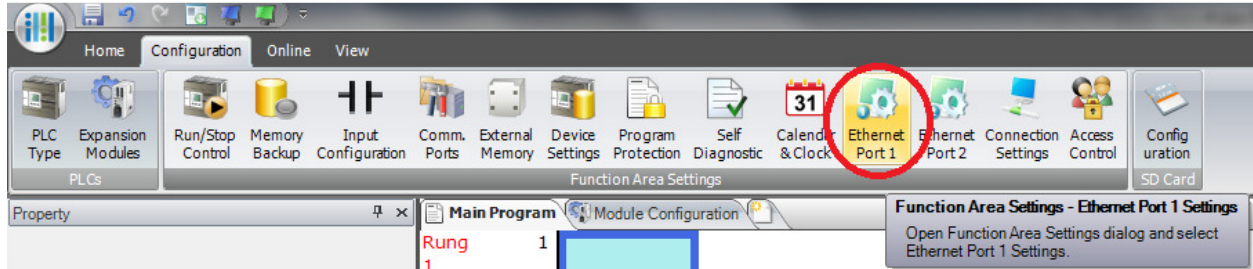


App Notes

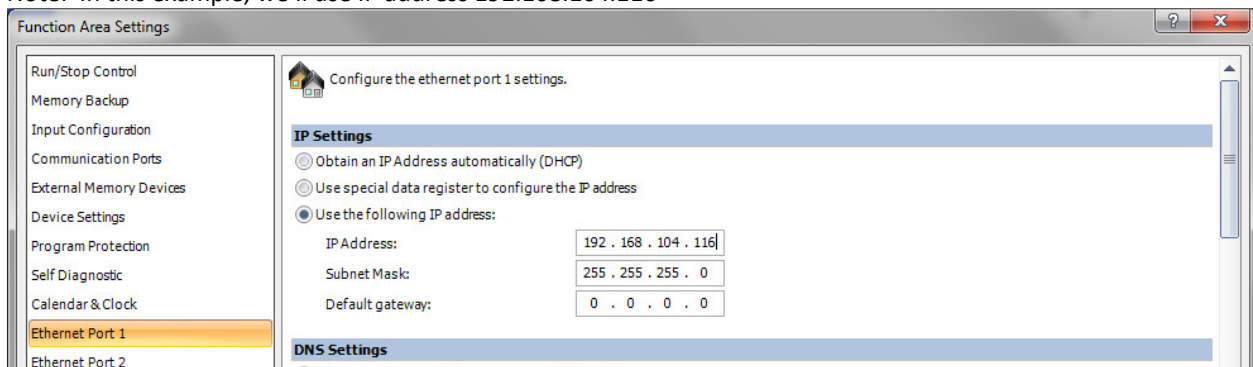
FC6A FTP Server Configuration

1. In WindLDR Configuration tab, click **Ethernet Port 1**.



2. Under IP Settings, configure your FC6A-D* CPU IP address.

Note: In this example, we'll use IP address 192.168.104.116

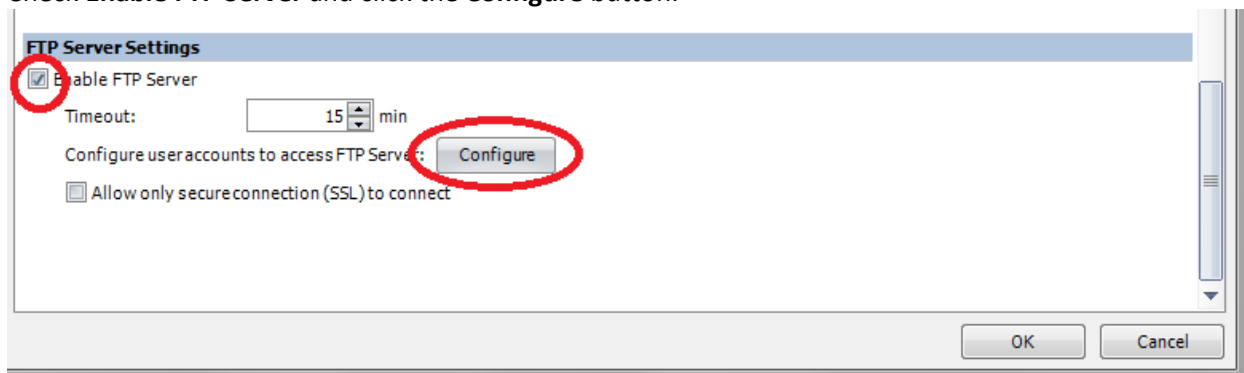


3. Scroll to the bottom until you see FTP Client and Server Settings.

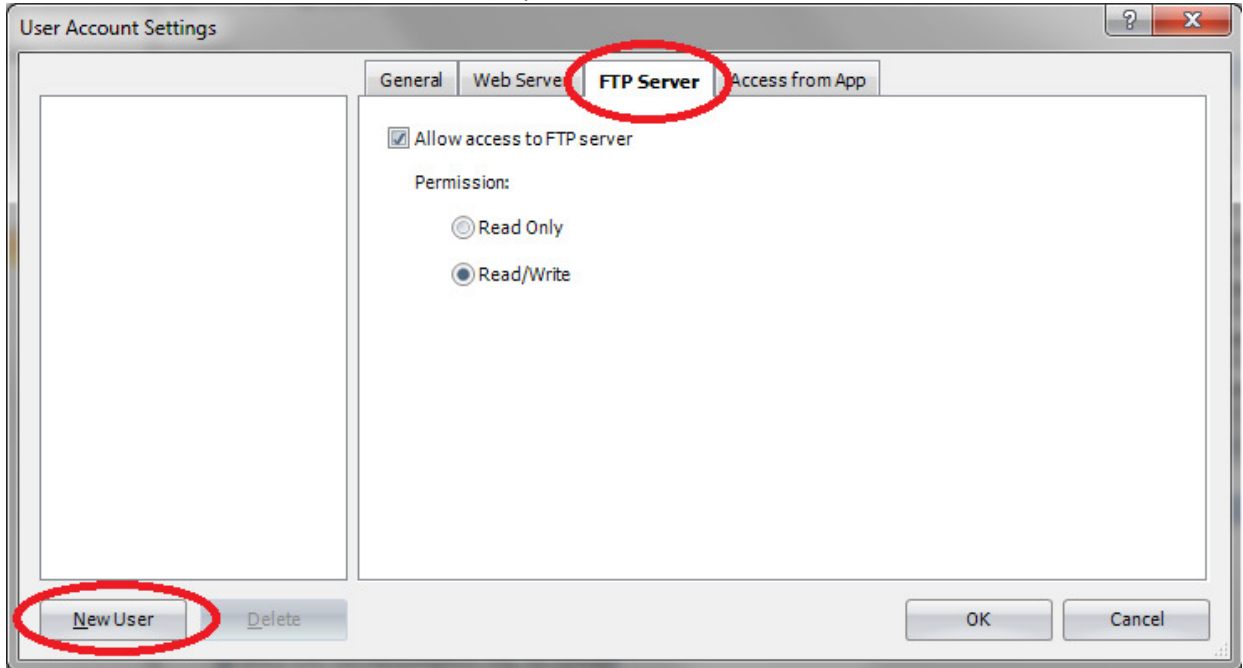
4. Uncheck FTP Client Settings.



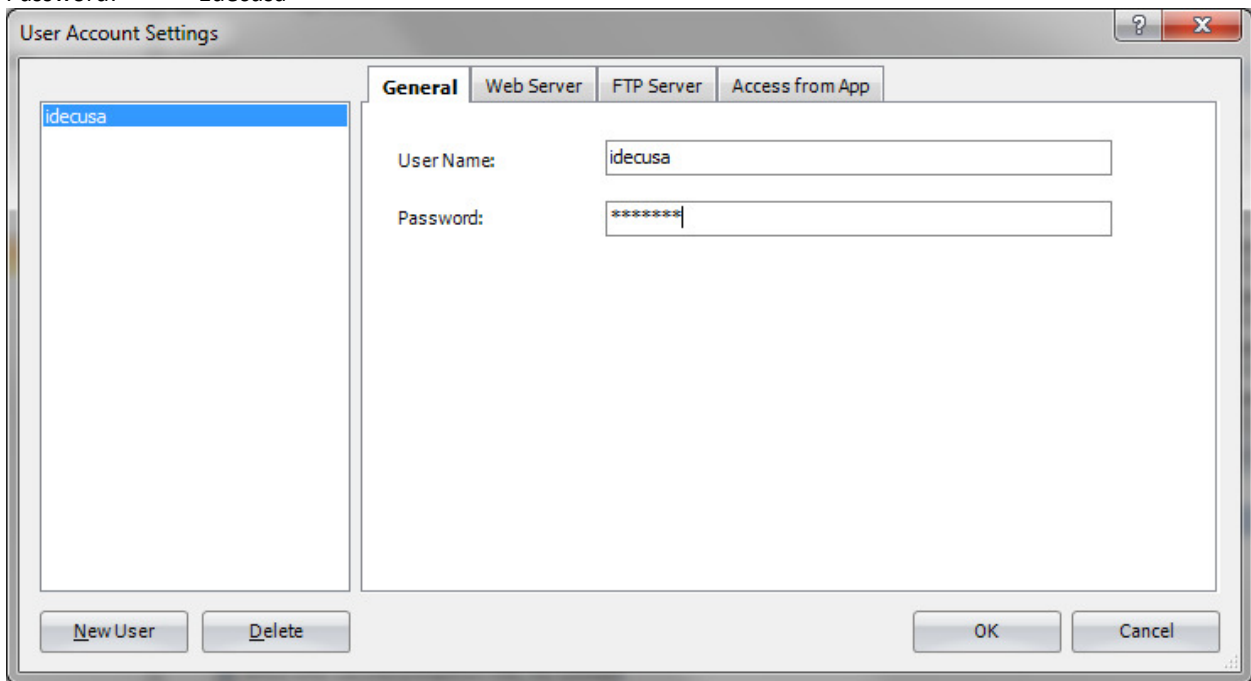
5. Check **Enable FTP Server** and click the **Configure** button.



6. Click **FTP Server** tab, check the Read/Write permission, and click the **New User** button.



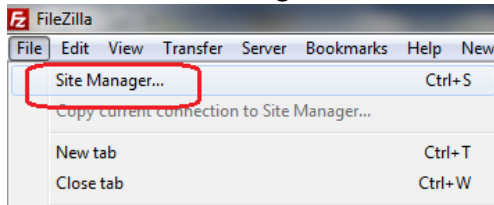
7. Enter the User Name and Password.
Note: In this example, we'll use the following
User Name: idecusa
Password: 1decusa



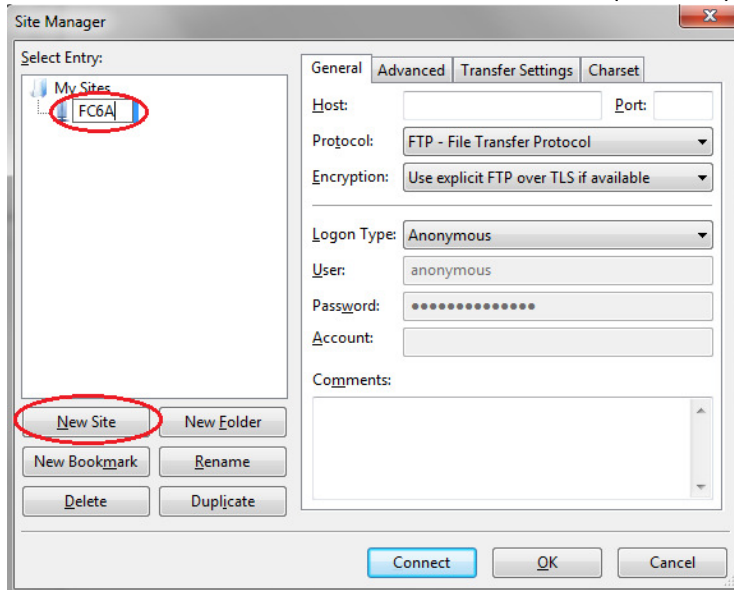
8. Click OK and OK button to exit.
9. Download project to FC6A-D* CPU.

10. Launch FTP Client application. In this example, we'll use FileZilla (<https://filezilla-project.org/>).

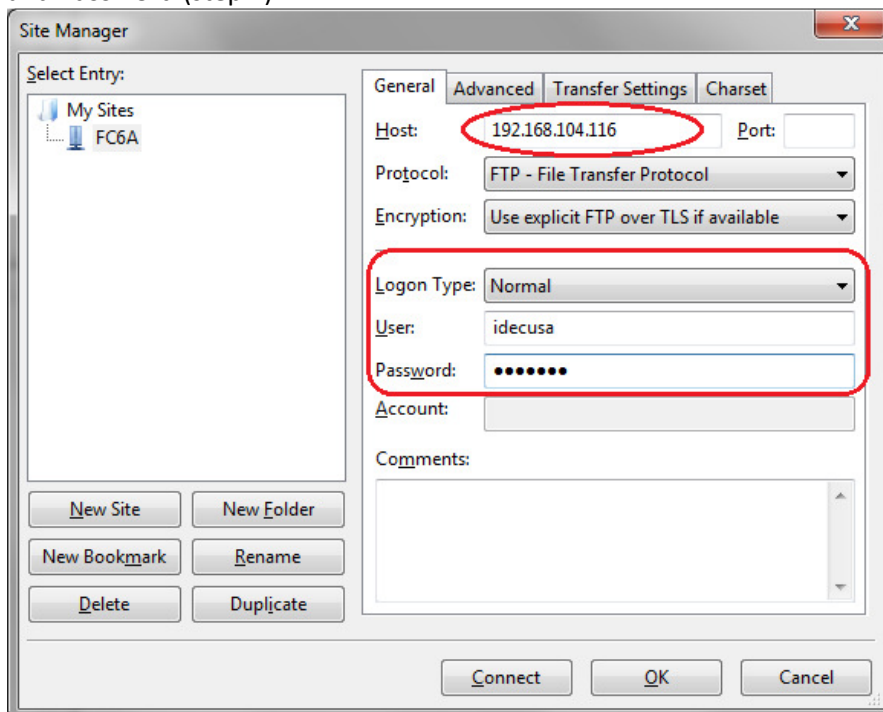
11. Click **File** → **Site Manager**



12. Click the **New Site** button and enter the site name (i.e. FC6A).

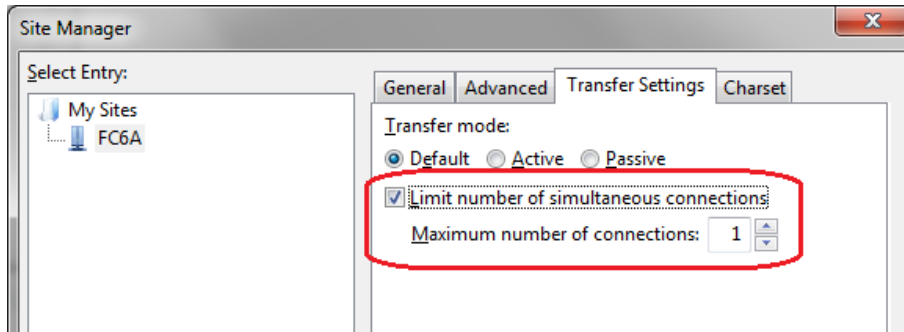


13. Under **General** tab, enter the PLC IP address (step 2) in **Host**. Select **Normal** as **Logon Type** and enter the **User** and **Password** (step 7).

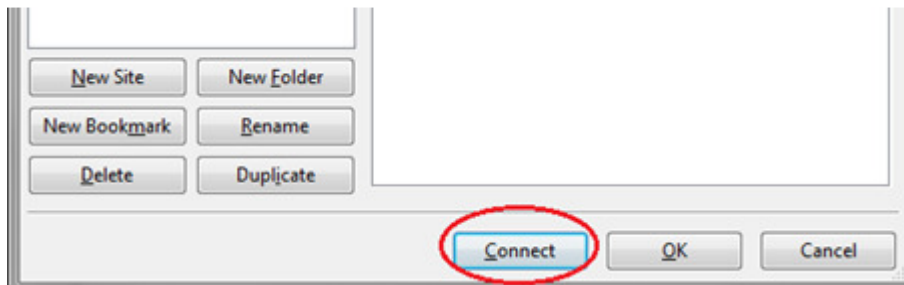


14. Click the **Transfer Settings** tab. Check the box “Limit number of simultaneous connections” and set the Maximum number of connections to **1**.

Note: This step is critical because the FC6A Plus is limited to 1 Client connection.



15. Click the **Connect** button.



16. Assuming the SD card is plugged into the FC6A Plus with data, you now have read/write access to the SD memory card.

